

# LASTING IMPACT

 JUPITER MEDICAL CENTER FOUNDATION

2016

JANUARY-MARCH



## Jupiter Medical Center's Bold New Future as a Regional Health Care Provider

### Donors Play Key Role in Realizing Vision

Jupiter Medical Center wants to redefine the future of health care in South Florida, and beyond.

Already recognized as a world-class provider and ranked No. 1 in patient satisfaction in Martin and Palm Beach counties, Jupiter Medical Center is embarking on a \$300 million campaign to expand patient access to the highest quality care across the region, while adding leading-edge services, new facilities and advanced technologies.

A bold and ambitious move, administrators are relying on equally visionary donors to help realize that dream.

"Our goal is to transform Jupiter Medical Center into a regional provider that can deliver innovative, life-giving care for generations to come," explains John Couris, President and CEO of Jupiter Medical Center. "As a nonprofit hospital, generous donor support will be vital to our success."

The campaign—*Vision. Innovation. Impact.*—is focused on growing critical health services such as advanced cardiac care, expanded pediatric services and comprehensive stroke care, while attracting the next generation of medical leaders to Jupiter Medical Center.

Central to that vision is the construction of new facilities, including state-of-the-art patient rooms, labs and surgical suites,



The Campaign for Jupiter Medical Center

and the expansion of partnerships with the most highly skilled physicians.

Putting patient care first will be the cornerstone of this transformation according to Joseph Taddeo, Chairman of the Board, Jupiter Medical Center Foundation.

"Our vision is to foster innovation in patient-centered care, and advanced procedures and services. We're reimagining the future

» CONTINUED ON PAGE 3

### INSIDE THIS ISSUE

#### P4 / THE RESULTS

The results are in! The Foundation has raised over \$560,000 from our past three events! Thank you to all who participated.

#### P5 / BREAST CENTER

The Margaret W. Niedland Breast Center opened thanks to the generous support from Suzanne Niedland.

#### P6 / PATIENT SPOTLIGHT

Breast cancer patient, Jamie Demoski, credits Jupiter Medical Center with saving her life. Jamie thanks Suzanne Niedland.

#### P7 / ADVANCED TECHNOLOGY

We rely on contributions to remain a world-class medical provider. Your donations have helped acquire leading-edge technology.

#### P10 / STROKE CENTER

The Annual Golf Classic raised close to \$3.5 million since its inception. This year's proceeds benefit the Stroke Center.

#### P12 / WELLNESS CENTER

The Cary Grossman Health & Wellness Center was made possible through a lead gift from Lynne and Robert Grossman.

## Letter from the Chairman

John Couris and his management team have developed a vision of what Jupiter Medical Center should look like five to 10 years out. The purpose is to ensure Jupiter Medical Center will be able to continue to meet the health care needs of our community in a world-class fashion.

This vision takes into account the needs of an aging population; more health care taking place outside of the hospital, leaving more severe and complex treatments in the hospital. These are just a few of the trends that had an impact on the vision.

A strategic plan has been developed to make the vision a reality.

It is the responsibility of the Jupiter Medical Center Foundation to help raise the funds to execute the strategic plan and to make the vision a reality—sooner rather than later.

This is your medical center. All of these plans and fundraising are taking place for you; to ensure you continue to have access to the world-class health care you need and deserve.

We will make this vision a reality. The only variable is the pace of progress. Your support will continue to be the driving force.

*Remember, it is not a question of if you will ever need Jupiter Medical Center; it is a question of when.*

Thank you for your continued support.

Sincerely,

Joseph R. Taddeo

## Letter from the President of Jupiter Medical Center Foundation

Welcome to the new Jupiter Medical Center Foundation newsletter, *Lasting Impact*. I am pleased to report the last nine months have been a very busy time.

Jupiter Medical Center is working hard to put you and our community at the forefront of personalized care, one patient at a time. To fulfill this critical mission, we are embarking on a bold \$300 million comprehensive campaign—*Vision. Innovation. Impact.*—that will expand access to world-class health care across our region.

In order to support this aggressive campaign, the Foundation team has grown to include development professionals from places such as Cleveland Clinic, the University of Miami, American Red Cross and Baptist Health. With this team of talented fundraising professionals, we are working tirelessly to expand the reach of the Foundation in order to have an impact on the health care of our community.

The Foundation team has also worked to develop a beautiful donor recognition wall in the newly renovated Main Lobby, named for Lawrence and Stephanie Flinn. I encourage you to come for a tour and visit with a member of our Foundation team.

We have also had great success with our events to date. In September, the 5th Annual Highballs and Hibiscus event at Frenchman's Creek attracted our largest crowd ever, where more than 425 attendees helped raise \$100,000 to benefit Pediatric Wellness. A few weeks later, we drew one of our largest crowds for the Key to the Cure Kickoff Party at Saks Fifth Avenue on October 14. The most recent event, our 37th Annual Charity Golf Classic, teed off on Monday, November 16, with a full field of 287 professional, celebrity and amateur players. With the highest level of sponsorship in the history of the tournament, the event was a huge success netting \$447,000 to support our Comprehensive Stroke Program.

We are off to a great start, and with support from you, our donors, we expect to achieve great things in 2016.

All my best,

Liv Vesely



### Mark Your Calendar

February 25, 2016, is the official launch of the \$300 million campaign at Trump National.

## JUPITER MEDICAL CENTER FOUNDATION, INC. OFFICERS AND TRUSTEES

Joseph R. Taddeo.....**CHAIRMAN**

Joseph C. Kempe, JD, LL.M. ...**VICE CHAIRMAN**

Liv E. Vesely, MA, MPH.....**PRESIDENT**

Donald H. McCree, Jr. ....**SECRETARY**

David J. S. Nicholson .....**TREASURER**

Leonard Abramson  
Edward L. Babington  
Herbert M. Baum  
Kevin G. Boyle  
Douglas S. Brown  
Tyler R. Cain  
Arthur B. Calcagnini  
Paul J. Chiapparone  
George Damman

Lodewijk J. de Vink  
Martin Dytrych  
Patti W. Hamilton  
Jack Healy  
Bobby Hendel  
Richard J. Katz, Jr.  
Connie Kist  
William C. Mattison, Jr.  
Jane F. Napier

Elizabeth R. Neuhoff  
James E. Perrella  
Anthony A. Petrarca  
Joseph Petri  
Katharine F. Plum  
Cary Stamp  
Dennis Williams

**Emeritus:** Peter O. Crisp



## Jupiter Medical Center's Bold New Future

>> CONTINUED FROM PAGE 1

of health care by putting patients at the center of everything we do," Taddeo says.

### Seeking donor support

Philanthropic support is a critical component in helping Jupiter Medical Center build a fully integrated system of care for the region, where services are accessible and abundant, and where leading-edge medical innovations, top-tier medical professionals and the best multidisciplinary ideas come together.

"Everything we do is designed to exceed expectations," says Liv Vesely, President of the Jupiter Medical Center Foundation. "With donor support, our campaign's mission is to deliver the highest level of care to more patients, well into the future."

### The campaign at a glance

The key areas where donors can have an immediate impact in helping Jupiter Medical Center become the region's premier hospital of choice include:

**Patient-Centered Care** – Create a dedicated concierge unit for personalized service, renovate patient rooms with state-of-the-art technology, and expand access and programs for improving patient outcomes.

**Cancer Care** – Develop a new Comprehensive Cancer Institute, where patients will be

able to receive advanced diagnostic and outpatient cancer treatments, along with minimally invasive surgical options.

**Cardiovascular Care** – Expand cardiac services and become a Level II cardiac care unit, so patients can remain in the area for more complex diagnostic, minimally invasive, interventional and surgical cardiac procedures.

**Women's and Children's Care** – Build a Level II neonatal intensive care unit, a 12-bed inpatient De George Pediatric Unit with two operating suites, and expanded access to crucial obstetric/gynecologic services.

**Advanced Neurological Care** – Expand expertise so Jupiter Medical Center can offer a Comprehensive Stroke Program to help patients with the most complex stroke and neurological disease, and add leading-edge technology.

**Surgical Services** – Transform into a regional, multidisciplinary surgical center, offering the most comprehensive and advanced surgical care in the nation.

**Orthopedics and Spinal Care** – Create the most advanced microsurgery and minimally invasive orthopedic and spine surgery in the country.

**Digestive Health** – Become a regional destination for digestive health by creating the most technologically advanced care of its kind.

**Medical Education and Research** – Invest in groundbreaking research to advance the treatment of traumatic brain injury, cancer, and orthopedic and spine surgery.

**Advanced Technology** – Provide greater access to technologies of the future, including robotic surgery, intraoperative radiation and other sophisticated technology to speed treatment and recovery.

**Endowment** – Create an endowment fund so that monies are available to continue Jupiter Medical Center's legacy of world-class health care for generations to come. By funding an endowment, you will make it possible for Jupiter Medical Center to continue its legacy of world-class health care for generations to come.

**Unrestricted** – Establish a fund with maximum flexibility, enabling Jupiter Medical Center to put donations to work where they are most needed in fulfilling campaign goals.

To learn more about how Jupiter Medical Center is reimagining tomorrow's health care today, and how you can help, please contact Liv Vesely at 561-263-5728.

## Meet the Jupiter Medical Center Foundation Staff



*Pictured left to right:*

**Jennifer Miller**, Development Assistant

**Jamie Uteschill**, Donor Relations Coordinator

**Angela Scott**, Director of Data Analytics

**Tara Holcomb**, Director of Major Gifts

**Regan Tarpey**, Director of Communications and Events

**Liv Vesely**, President

**Dawn DePastino**, Events Coordinator

**Amy Powers**, Executive Director of Major Gifts

**Kathy Sullivan**, Director of Administration

**Janine Boylan**, Manager of Donor Relations

**Virginia McCormack**, Administrative Coordinator

*Not pictured:* **Laura Golden Barker**, Director of Major Gifts,  
**Jenna Marie Gillespie**, Development Coordinator, **Lori Elsbree**,  
Manager of Events

## The Results Are In...

### 5th Annual Highballs and Hibiscus

Frenchman's Creek Country Club

September 25, 2015

Funds raised for Pediatric Wellness

**\$100,000**



### 37th Annual Charity Golf Classic

Lost Tree Club

Jupiter Island Club

McArthur Golf Club

November 16, 2015

Funds raised for Comprehensive Stroke Services

**\$447,000**

A special thank you to our sponsors, underwriters, donors, players and attendees for making these events a huge success!





## Honoring a Great Woman with a Gift to the Community

Suzanne Niedland wanted to honor the memory of her mother, Margaret W. Niedland, who lost her battle to breast cancer in the spring of 2011. By building a state-of-the-art breast center that offers the full spectrum of breast health service, as well as outpatient imaging services, Suzanne did just that. "A lasting legacy that benefits the entire community was our dream and is now a reality," Suzanne says.

Suzanne was extremely hands-on in influencing the breast center's architecture and interior design. Her vision was to create a "relaxed, peaceful patient environment that will reduce anxiety at what can be a stressful and emotional time." She also curated the extensive artwork, personally donating pieces and enlisting artists to contribute works to create a comforting atmosphere for patients and visitors.

Suzanne understands that a balance must be created between state-of-the-art technology and a nurturing, calming environment. Thanks to her guiding hand, the breast center achieves this harmony.

The building includes soft lighting and feng shui elements with a "spa-like" aesthetic

to enhance the tranquil environment. Caring Suite technology enables patients to customize the lighting and music, while selecting soothing images that can be projected onto the ceiling during MRIs. A healing garden, located just off the imaging area, is open to all who need the serenity found in this living sanctuary.

### Donors complete vision

Today, the first floor houses two low-dose, 3-D mammography rooms, three breast ultrasound rooms, technology for minimally invasive breast biopsies and more. The second floor will house a multidisciplinary clinic to be used by medical oncologists, radiation oncologists, surgeons, social workers and other specialists. The design allows for a seamless patient experience and a multidisciplinary approach to cancer care, eliminating the need for patients to travel to multiple locations and office visits.

### Opening celebration

The opening celebration of the Margaret W. Niedland Breast Center was marked by two special occasions.

On May 6, 2015, more than 200 guests, including Governor Rick Scott and State Representative MaryLynn Magar, attended a reception. Suzanne Niedland spoke in-depth about her mother and the vision to create a world-class breast center. Governor Scott shared a story about a breast cancer survivor who received world-class care at Jupiter Medical Center.

Several days later, an open house event welcomed the entire community. This family-friendly event included activities for all ages, from face painting to manicures and chair massages. Local residents toured the healing garden, imaging equipment and exams rooms, and explored the facility's extensive art collection.

The breast center has proudly earned accreditation from the American College of Radiology (ACR) and the National Accreditation Program for Breast Centers (NAPBC). It is also designated an ACR Breast Imaging Center of Excellence.

>> CONTINUED ON PAGE 6

## Honoring a Great Woman

>> CONTINUED FROM PAGE 5

### Services at the Margaret W. Niedland Breast Center include:

- Outpatient imaging
- Patient navigators for personalized support
- Genetic testing and counseling for cancer risk
- 3-D mammography with the lowest radiation dose
- Bone density testing
- Ultrasound breast imaging
- Minimally invasive breast biopsies
- Positron emission mammography (PEM) and positron emission tomography (PET) for staging of cancer and measuring the effectiveness of treatment
- Board-certified radiologists with fellowship training in mammography

## About the Foundation

Community support remains the cornerstone of Jupiter Medical Center.

Whether it is ushering in the birth of a baby or celebrating the rebirth of a stroke patient through rehabilitation, all are enhanced by philanthropic support to the Jupiter Medical Center Foundation.

As the premier, not-for-profit medical center in Palm Beach and Martin counties, Jupiter Medical Center relies on your charitable gifts to ensure the quality of all that we do for our patients and their families.

### Connect with Us



Please “Like” us on Facebook to stay up-to-date on all of our latest news and events.

## Patient Spotlight

### Lucky to Be Diagnosed



In late summer 2013, Jamie Demboski was just a normal soccer mom who enjoyed Saturday mornings with her husband, watching their two young daughters play soccer. It was also the time of year she was due for her annual OBGYN checkup. Her doctor suggested she get a mammogram. Jamie was young and healthy, and never had a history of cancer in her family, but her doctor pushed and pushed, and was able to convince Jamie that getting a mammogram at an early age was critical in developing a baseline for future mammograms.

Jamie chose Jupiter Medical Center for her screening, and it revealed a small lump. She thought for sure it was nothing, surely benign, but further testing confirmed cancer. The initial diagnosis left her a bit stunned, but Jamie recalls from the day she was diagnosed, the radiologist began discussing treatment options.

Jamie made some tough decisions with her family by her side, and decided to attack her cancer with everything she had. She was assigned a Patient Navigator who became another set of eyes overseeing her care—before and after surgery, helping to keep her informed throughout her entire treatment. With friends in oncology in other cities, Jamie also received “coordinated care” at Jupiter Medical Center, where outside specialists from top cancer centers conferred with Jupiter Medical Center physicians in developing a complete treatment plan.

“That coordination gave me tremendous peace of mind,” Jamie says. “Jupiter Medical Center was my first choice for care because I was convinced I was in the hands of an ‘A-Team’ that had a solid plan for me.”

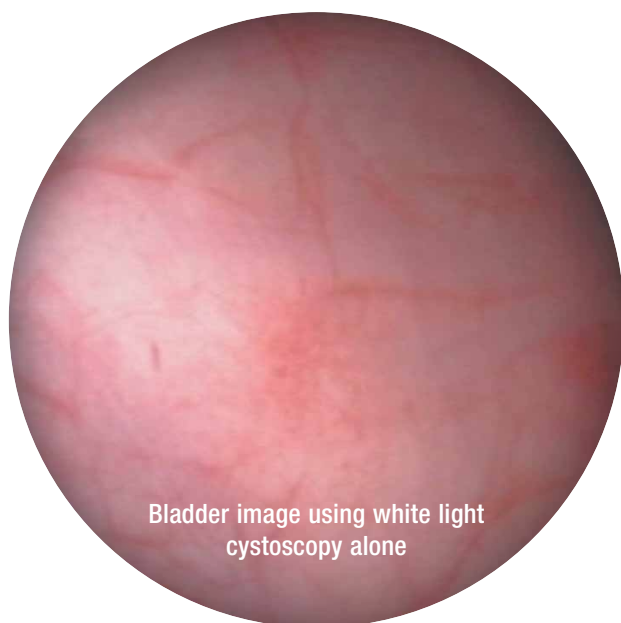
Since the completion of her treatment and a successful surgery to eradicate the tumor, Jamie continues to receive follow-up care at the Margaret W. Niedland Breast Center, and will do so until she reaches the five-year mark.

When asked how she feels looking back at her diagnosis and treatment, Jamie regards her cancer as a “journey with a purpose” in which she can help others by sharing her story. “In a way, I feel lucky to have been diagnosed with breast cancer,” says Jamie, as the experience of cancer has led to a renewed purpose in life. Jamie Demboski brings a powerful perspective to her outlook on cancer and life beyond cancer. She finds her illness to be a source of gratitude, purpose and resilience.

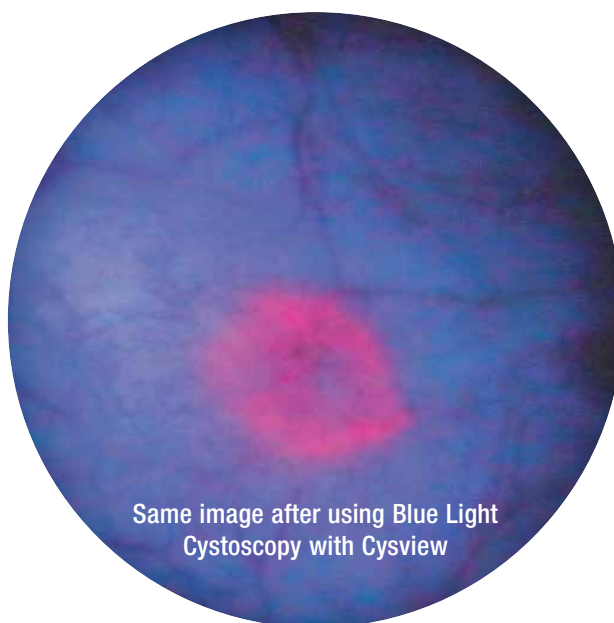
## Advancing Technology—Your Donations at Work

As a nonprofit, Jupiter Medical Center relies on the generous contributions of donors to acquire leading-edge technology and remain a world-class medical provider. Here are two examples of your donations at work.

### Blue Light Cystoscopy – Improving early detection



Bladder image using white light cystoscopy alone



Same image after using Blue Light Cystoscopy with Cysview

Bladder cancer is one of the most commonly diagnosed cancers with an estimated 73,500 new cases each year. In the U.S. alone, it's the fourth most common cancer in men. Like most cancers, early detection offers the best hope for survival.

Today, early detection has been greatly improved with Blue Light Cystoscopy. Jupiter Medical Center is the first Florida hospital to permanently install this advanced technology for patients.

"Blue Light Cystoscopy is a wonderful piece of technology once only available at academic medical centers," explains Dr. R. Neill Borland, Medical Director of Genitourinary Oncology at Jupiter Medical Center. "Donations have brought this exciting development here to our local community and now we can help local residents."

Blue Light Cystoscopy with Cysview has been shown to outperform traditional white light technology in detecting tumors. A fluorescent agent, or "dye," is put into the bladder, after which the physician uses the cystoscope to view the area.

The combination of dye and the blue light better defines tumors. This allows for better identification of small or subtle tumors. It also helps to ensure a more complete removal of the tumor.

### 3-D Laparoscopy – View of the future, here today

3-D technology is emerging as an important tool in the operating suite. Rather than using two-dimensional imaging, a 3-D view greatly improves the depth and spatial perception for surgeons, leading to better outcomes.

Jupiter Medical Center is the first in Florida and one of a handful of hospitals nationwide to offer the 3DHD Vision System by CONMED for laparoscopic procedures. "The generosity of donors has elevated the quality of care and equipment here at Jupiter Medical Center," says Dr. Jefferson Vaughan, Medical Director of the Institute for Metabolic and Bariatric Surgery at Jupiter Medical Center.

Dr. Vaughan began using the 3-D, high-definition camera as an addition to the laparoscopy tower in his surgeries. He uses 3-D laparoscopy in surgeries such as bariatric and hiatal hernia repairs.

Compared to open surgery, laparoscopic approaches offer reduced pain, shorter recovery times and better cosmetic results. The 3DHD Vision System restores the surgeon's natural visual asset and depth perception, which studies have shown leads to a significant reduction in error rates.

With the help of 3-D technology, surgeons like Dr. Vaughan can experience this improved perspective, while maintaining the important, less-invasive aspects of laparoscopic surgery.

# Carl and Connie Bellini

## A Love Affair with Heart Health

When Carl and Connie Bellini met in Washington, D.C., and married in 1958, heart health was the last thing on their minds. Typical of young couples, they were focused on career and family.

Carl, who describes himself as a “Type A” executive at the time, built a successful career running pharmacies and Sherwin Williams’ stores when the family lived in Cleveland and Dallas. Connie dedicated herself to creating a loving home and raising their children.

Quickly, their health became a big concern for them during retirement as both Connie and Carl were diagnosed with cancer. After successful treatment of Connie’s breast cancer, and Carl’s prostate cancer, they’re proud to be survivors. Little did they know at the time that there would be another health challenge ahead.

At age 65, Carl underwent double bypass heart surgery and was diagnosed with a series of cardiovascular issues.

## Longtime Jupiter Medical Center supporters

Carl and Connie got involved with the Jupiter Medical Center Foundation over 20 years ago by attending golf tournaments and other social fundraising events. In 2007, they decided to make Palm Beach County their permanent home.

Once they became full-time residents, managing their medical concerns meant more interaction with Jupiter Medical Center’s services and team members. Recognizing the importance of philanthropy and the impact it can have, Connie and Carl were inspired by the cardiac care he received and the new partnership between Mount Sinai Heart New York and Jupiter Medical Center. The Bellinis have committed several planned and outright gifts in recent years to support the growth of the cardiology program.

## Induction to the Founder’s Society

In honor of their steadfast and generous support, they will be inducted this spring into the Jupiter Medical Center Founder’s Society, which recognizes donors with lifetime giving of \$100,000 or more.

Looking back, Carl feels that he and his wife have always received the “royal treatment” as the entire staff—from physicians to nurses to technicians—is always so warm, friendly and kind. He jokes that while no hospitalization is fun, “it is a pleasure to be admitted to Jupiter Medical Center.”

As their 50th wedding anniversary approaches, Connie and Carl’s affair of the heart has truly taken on a new meaning, thanks to the compassionate and expert care they receive at Jupiter Medical Center.

## More About Mount Sinai Heart New York at Jupiter Medical Center

This innovative partnership is dedicated to improving heart health through world-class patient care. The affiliation encompasses nearly all facets of cardiac care, including interventional cardiology, cardiac rehabilitation, electrophysiology, noninvasive imaging, congestive heart failure, wellness and prevention, and research and education. Key benefits for patients include:

- Sharing knowledge, experience and best practices.
- Access to clinical consults for patients with physician colleagues at Mount Sinai Heart New York.
- Access to the latest cardiac therapies and advanced treatment options.

For more information on Mount Sinai Heart New York at Jupiter Medical Center or to explore opportunities to support cardiology, please contact the Jupiter Medical Center Foundation at 561-263-5728.





# Albert and Birdie Einstein Fund Honors the Legacy of Joyce Boyer



Jupiter Medical Center Foundation is proud to announce a generous, philanthropic grant from the Albert E. and Birdie W. Einstein Fund for the future Comprehensive Cancer Institute in honor of Joyce Boyer. Boyer, a long-term trustee of the Einstein Fund, was also a beloved volunteer at Jupiter Medical Center. The grant will support a café in the new Comprehensive Cancer Institute, providing patients and families a welcoming place to gather during their visits and treatments.

Joyce Boyer lived a life of service. She began volunteering with the Auxiliary at Jupiter Medical Center in 2007 while still working with the Einstein Fund. Joyce introduced the volunteer position of “greeter” to ensure that all patients and visitors felt welcomed and had a positive first impression as they entered our hospital; a distinctive quality that so many patients and community members have come to appreciate.

Joyce was also passionate about training new Auxiliary members, even helping to formalize the program through the creation of job descriptions and volunteer checklists to support a culture of hospitality, kindness and professionalism.

As a trustee of the Einstein Fund, Joyce saw firsthand how generous gifts could transform not only individuals, but entire communities as well. Although Joyce passed away in 2012, the current trustees believed that the vision of Jupiter Medical Center and its future Oncology Campus was a good match with its own mission to “further the work of worthwhile organizations and charitable causes.”

## A legacy of giving

To honor the passion Joyce had for Jupiter Medical Center, the Einstein Fund recently made a \$250,000 gift in her name, a fitting legacy of her professional and giving spirit.

This generous gift will help build a fully integrated Comprehensive Cancer Institute, where leading-edge medical innovation, top-tier medical professionals and the best multidisciplinary ideas in cancer care come together for the benefit of the entire community. This center will bring hope and healing to cancer patients in our community.

## Joyce Boyer Café

One of Joyce’s hallmark traits was her love of healthful nutrition and good food. It was not unusual for Joyce to share her cherished recipes and words of wisdom with friends and fellow Auxiliary members.

And so, the gift made by the Albert and Birdie Einstein Fund in her honor will not only include the naming of a café—the Joyce Boyer Café—but also, the occasional batch of her famous chocolate chip muffins (see recipe above), which will be another legacy to benefit all who visit Jupiter Medical Center.

## Joyce Boyer’s Chocolate Chip Muffins

Four eggs (beat well)

1 cup vegetable oil

2 cups sugar

2 cups flour

1 teaspoon baking soda

2 tablespoons cinnamon

1 small can pumpkin purée (15 oz.)

1 bag chocolate chips (approx. 2 cups)

Mix together and bake at 350 degrees for 20-25 minutes. Yields 2-dozen muffins.

## Jupiter Medical Center Foundation Remembers

H. L. “Larry” Parker joined the Jupiter Medical Center Foundation Board of Trustees on January 25, 2000, and served many years on the Foundation Board as Vice Chairman and a member of the Finance and Investment Committee. Mr. Parker served as emeritus until his death on October 21, 2015.

Theodore “Ted” Danforth joined the Jupiter Medical Center Foundation Board of Trustees on January 22, 2008, and served as a valuable member for many years. Mr. Danforth served as emeritus until his death on July 26, 2015.

Both Mr. Parker and Mr. Danforth provided strong leadership and direction while serving on the Board of Trustees. Their influence and service will be missed.



## A Little Guy with a Big Heart

Erik Cousino, a student at Jupiter Middle School, is an inspiration to us all.

Erik and his family recently moved to Jupiter from Palm Beach Gardens. Living close to Jupiter Medical Center, Erik has become increasingly aware of the community around him. As a perceptive and empathetic young man, he often sees Jupiter Medical Center patients' physical challenges and imagines the stress the patients face each day.

Erik felt compelled to help in any way he could, so he and his mother came to the Foundation with his piggy bank in hand. Erik asked that his donation be used to help those who are battling illness, specifically cancer.

The staff at Jupiter Medical Center and the Foundation was impressed to see such a young person with a big heart, and the desire to help others in their time of need.

Jupiter Medical Center thanks Erik for his generosity and caring spirit. He is truly an inspiring and special young man!

## Foundation's Annual Golf Classic Benefits Jupiter Medical Center Stroke Center

At Jupiter Medical Center, we're reimagining the way care for stroke and other neurological challenges is delivered so that world-class medicine, advanced technology and compassionate care come together—right here—where our patients and their families live and work.

Jupiter Medical Center Foundation's 2015 Annual Golf Classic raised \$447,000 to benefit the establishment of a Comprehensive Stroke Program. To achieve this goal, Jupiter Medical Center plans to enhance facilities, add leading-edge technology and expand expertise, which will improve outcomes for patients experiencing the most complex stroke and other neurological disease.

There were 287 professional, celebrity and amateur players who teed off at Jupiter Island Club, Lost Tree Club and McArthur Golf Club to take part in the charity event on November 16, 2015. Major sponsors included Presenting Sponsor – Tom Fazio; Pairings Reception Underwriters – Kevin and Lorraine Boyle; Tournament Sponsors – Carlton Fields Jordan Burt, NuVista Living - Institute for Healthy Living, Donald and Frances Herdrich, and William and Sondra Cunningham; Media Sponsor – *Jupiter Magazine/The Palm Bearer*; and Hole-In-One Sponsor – Braman Motorcars.



William Cunningham, Major Ryan Curry, USMC, Staff Sgt. Scott Steele, USMC and John Couris.



Annie Magioulis, Diane Brooks, Sue Fazio and Barbara Sezna.



# JMCF Charity Golf Classic Winners



## McARTHUR GOLF CLUB

### FIRST PLACE

Rick Whitfield – Pro  
Paul Walczak  
Jeff Morrison  
Stephen Krasner  
Gerry Aguirre

### SECOND PLACE

Maria Marino – Pro  
Mary Louise Montanari  
Margaret Ann Staples  
Carol Danner  
Patrice Regan

### THIRD PLACE

Bob Ford – Pro  
Sue Fazio  
Barbara Seezna  
Keegan Fazio  
Maribel Currey



## LOST TREE CLUB

### FIRST PLACE

Sue Ginter – Pro  
Sallie Grandi  
Kathy Rold  
Chris O'Neill  
Gail Sparra

### SECOND PLACE

Frank Bensel – Pro  
Alex Hernandez  
Jeff Didndak  
Scott Matusz  
Andrea Morgan

### THIRD PLACE

Brian Peaper – Pro  
Ed Shaw  
Rick Bayliss  
Janet Lewis  
Ryan Barry



## JUPITER ISLAND CLUB

### FIRST PLACE

Richard Terga – Pro  
Ron Chernow  
Frank Jerd  
Sam Fromkin  
Les Morris

### SECOND PLACE

Joels Bostic – Pro  
Peter Hill  
Meridith Snader  
Barry Snader  
Brian Davison

### THIRD PLACE

Del Ponchock – Pro  
Joe Jerkovich  
Frank Ryan  
George Bovenizer  
Tony Taccetta

## CLOSEST TO THE PIN

### Jupiter Island Club

Men Only: George Bovenizer – Hole No. 9  
Women Only: Patti Peterson – Hole No. 12

### Lost Tree Club

Men Only: Harold Davidson – Hole No. 8  
Women Only: Kathy Rold – Hole No. 11

### McArthur Golf Club

Men Only: Drew Hartline – Hole No. 17  
Women Only: Suzy Butterworth – Hole No. 3

## Jupiter Medical Center Foundation

1210 S. Old Dixie Highway  
Jupiter, FL 33458

Non-Profit Organization  
U S POSTAGE  
**PAID**  
WEST PALM BCH FL  
PERMIT # 1446

## Grossman Health & Wellness Opens on the Jupiter Medical Center Campus

On December 15, 2015, the Jupiter Medical Center Foundation hosted a private reception to celebrate the opening of The Cary Grossman Health & Wellness Center. The newly remodeled wellness center was made possible through a lead gift from Lynne and Robert Grossman. Designed with a spa setting in mind, the facility includes the only full-size, indoor heated pool in northern Palm Beach County, as well as exercise classes, state-of-the-art equipment, massages and other spa offerings, and a wide array of rehabilitation services. Lynne Grossman was personally involved in the design of the interior to ensure the space would be a peaceful yet first-rate facility for patients' rehabilitation, or members of the community looking to stay fit.

"At Jupiter Medical Center, the health and wellness of our entire community is our top priority," said John Couris, president and CEO of Jupiter Medical Center. "The Cary Grossman Health & Wellness Center enhances our ability to provide state-of-the-art rehabilitation, which gets patients back to their everyday lives. We've also invested in this wellness center because we believe we must play an active role and provide the resources needed to help everyone in our community achieve new levels of well-being. Our ultimate goal is keeping people healthy and out of the hospital."

The Cary Grossman Health & Wellness Center is located on the Jupiter Medical Center campus at 1004 South Old Dixie Highway. The facility is open to the general public with memberships available for purchase. To learn more about membership and offerings at the wellness center, please call 561-263-5775 or visit [jupitermed.com/health](http://jupitermed.com/health).



Robert and Lynne Grossman celebrate the official opening of The Cary Grossman Health & Wellness Center. Pictured left to right: Liv Vesely, John Couris, Lynne Grossman, Robert Grossman, Marty Dytrych and Joe Taddeo.

